

# Configuring Your UltraLite Email Server

## Introduction:

Thanks for trying this great server. I have been using it for some time and I am quite impressed with its ability and stability. Please take some time to review the Kolab.org website for more information and tips for getting the most out of your server. Also many thanks to the Kolab group for giving us a great product to use.

## Prerequisites:

This server is intended for those who are network administrators, system admins or other computer literate folks. Even if you have worked exclusively with Windows you still should be able to have this server up and running quickly. You should have a basic understanding of IP address, DNS and can find your way through a set of instructions. I believe that anyone can get the mail server up and running in less than an hour, and the Business server in less than two, but you will also need to know how to integrate it into your network and what ports to open on your firewall etc. It is also recommended that you familiarize yourself with VMware in that it is a necessary component of the installation and operation of this server. If you are not familiar with these concepts then this will be a challenge for you and I suggest you hire a network professional to assist you in your implementation.

## Credit where it is due:

Kolab and CentOS are both Open Source free products. I just took what others have done, read the documentation, asked friends questions and figured out how to make it work. In the case of the email server I am passing this on for free as my part of the contribution. In the case of the UltraLite Business Server I am charging for the time and effort to get all of the applications up and running in a stable LAMP environment. I am not charging for the software.

## Before you start:

Write down the **domain** you are going to be using for email and the **internal IP** address you will be using for the email server as well as the password you would like to use. We will reference this information quite often during the process and writing it down will reduce errors.

**UL Business Users: You will need a second available IP address for the other services for the configuration of the ULBS server. If that is the case please also note that IP address as well. I will refer to the first IP as the eth0 IP address and the second as the eth1 IP address.**

The default values are: mail.mydomain.com, 192.168.0.10 (and 192.168.0.11 ULBS only) and administrator.

Domain \_\_\_\_\_

IP Address 1 \_\_\_\_\_ (for eth0)

IP Address 2 \_\_\_\_\_ (for eth1)

Password \_\_\_\_\_

## Setting up your VM environment

1. Extract the downloaded .zip file that you downloaded to an appropriate location.

All you need to run the server is the VMware player that you can download from here

<http://www.vmware.com/products/player/>

2. After you have installed VMware Player go to File>Open and browse to the kolab.vmx file that you extracted earlier.

3. Click the green play button on the VMware Player console and your server will begin booting up.

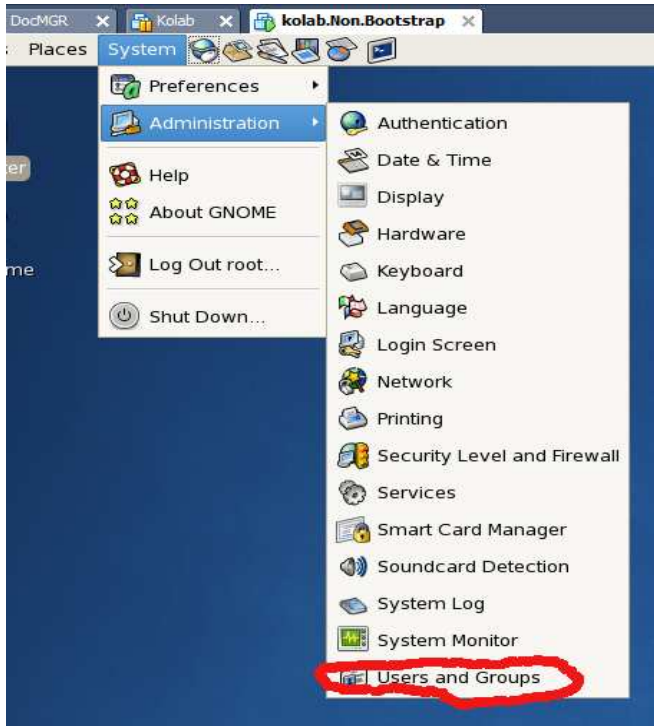
**Note: if asked "Copied it or Moved it" choose copied.**

## Logging in to your Virtual Machine

The login is root and the password is administrator

## Changing the root password

1. On the tool bar click on system >administration>users and groups



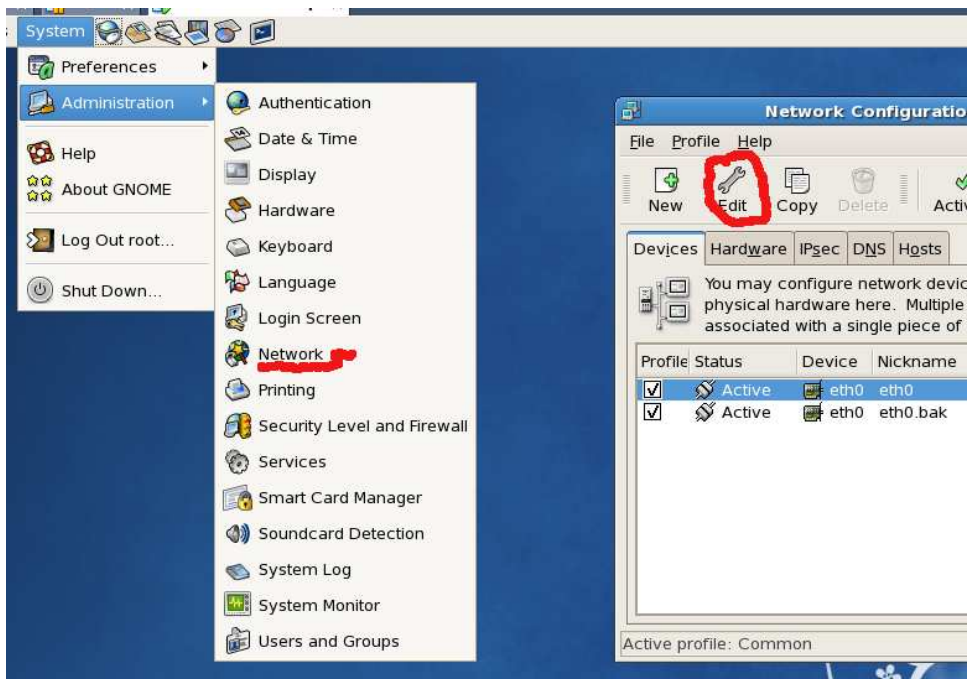
2. Go to Edit>Preferences and uncheck the Hide system users and groups box.



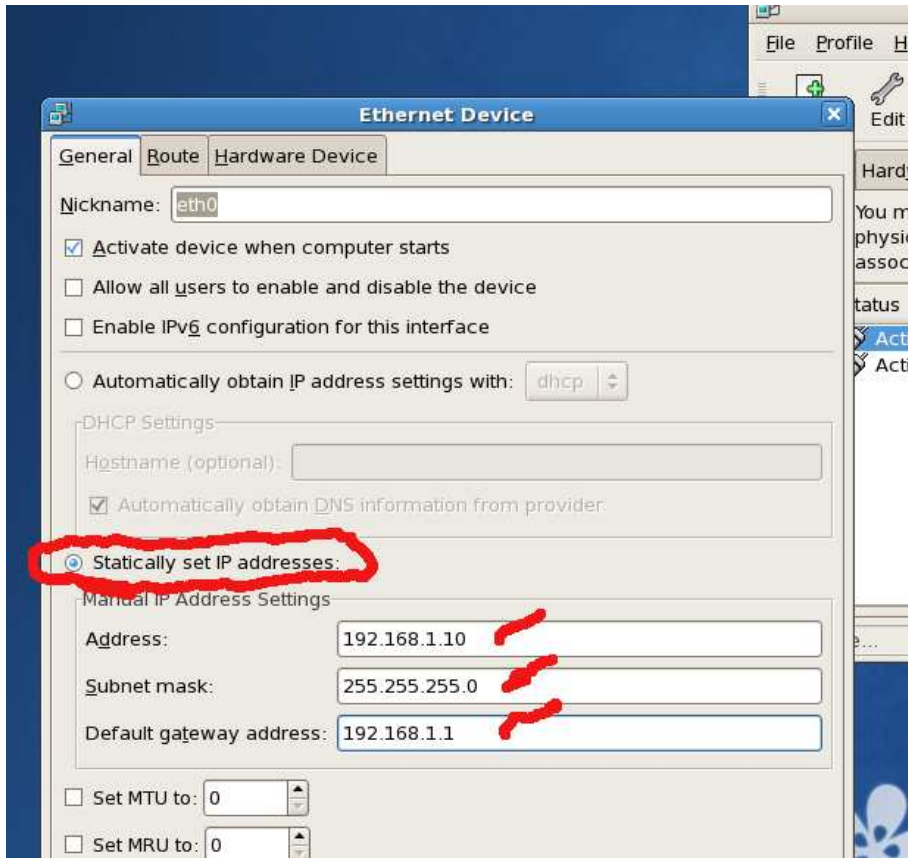
3. Double click root and type in you desired password and confirm it. Click OK and close the User Manager.

## Changing you IP address

1. Go to System>Administration>Network and click edit for eth0  
For ULBS you will need to change both the eth0 and the eth1 interface. Use the same process to edit eth1 giving it the second IP you wrote down at the beginning of the process

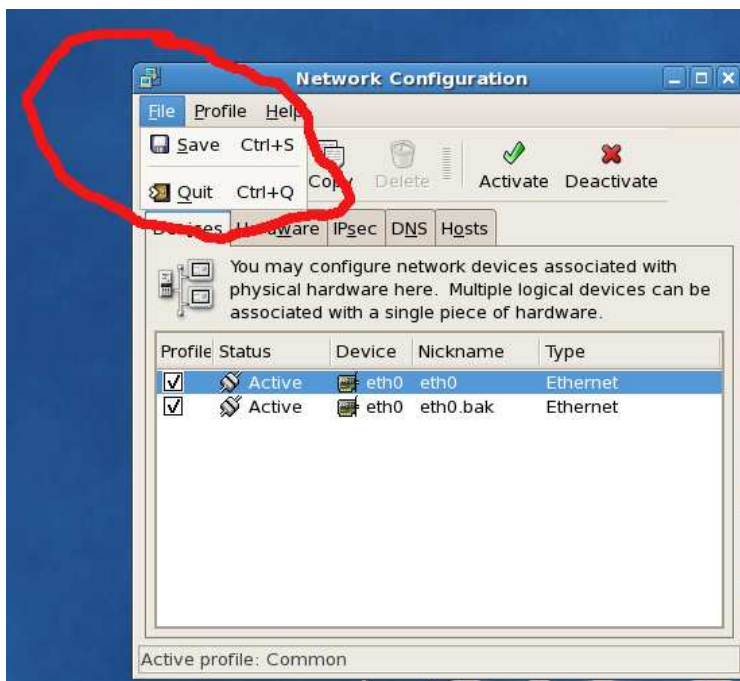


2. Click on the statically set IP address and set it for your IP scheme.



3. Click OK

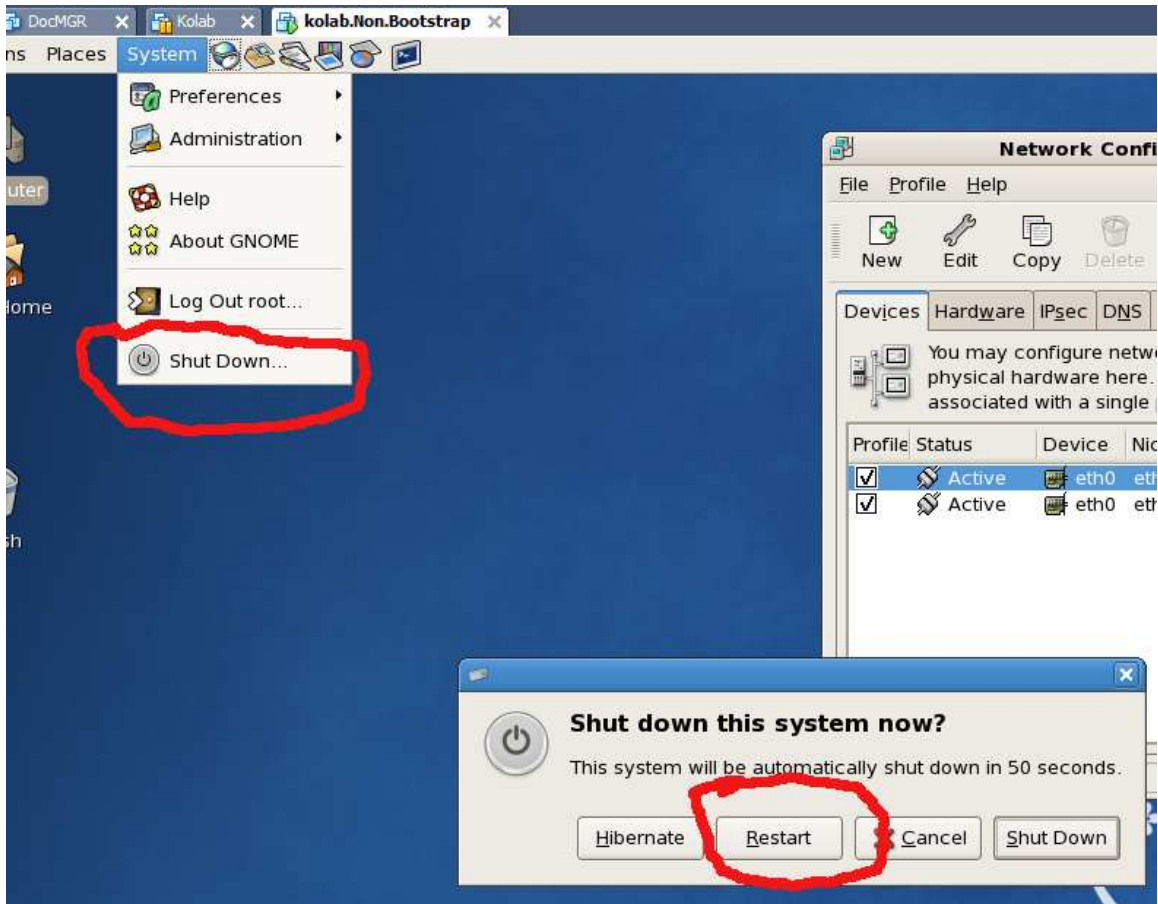
4. Then on Network Configuration click File>Save



5. You will get a screen confirming your change and warning you to restart your network services. Please reboot the Virtual Machine at this point.

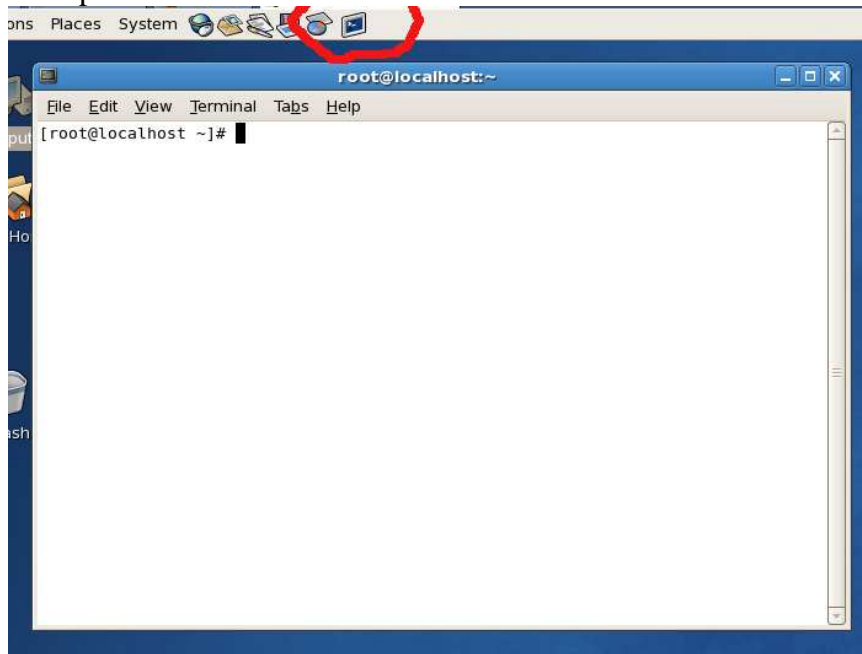
## Rebooting your Virtual Machine

Go to System>Shut Down and then chose reboot.



## Setting up Kolab for your domain

### 1. Open a terminal while in CentOS



2. Shut down all services for Kolab by typing `/kolab/bin/openpkg rc all stop`
3. Type in `/kolab/sbin/kolab_bootstrap -b` and answer the questions. They are pretty basic but if you need help go to the Kolab.org site for info.
4. Start up all services for Kolab by typing `/kolab/bin/openpkg rc all start`
5. Close the terminal

## Modify the Hosts File

1. This is necessary for name resolution prior to a DNS entry on your network. Don't skip this step or things won't work right during the setup process.
2. Double click on the "link to hosts file on the desktop"
3. Change 192.168.0.10 to your first IP address (the eth0 address)
4. If you are configuring the UltraLite Email server go to section "Setup your Kolab Server"

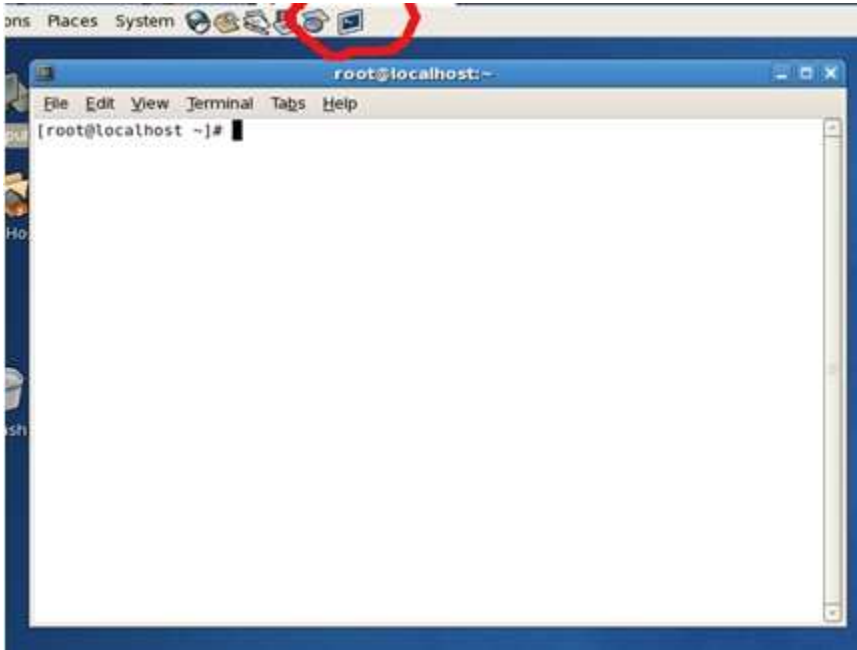
### ULBS users only

5. Change 19.168.0.11 to your second IP address (the eth1 address)
6. Change the mail.myserver.com to the name of your mail server (ie. mail.systemalternatives.net)
7. Save and Close the file

## Binding Kolab server to an IP address.

We are going to bind the Kolab web server to the first IP address (eth0)

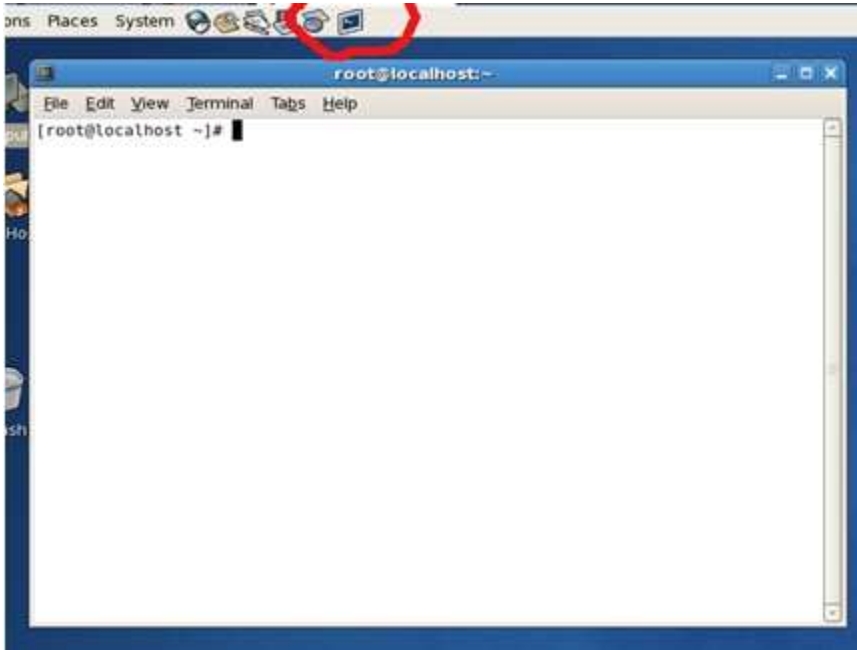
1. Open a terminal while in CentOS



2. Start all services for Kolab by typing `/kolab/bin/openpkg rc all start` (You will get an error that apache can't start, don't worry about that for now>)
3. Minimize the terminal
4. Double click on the "Kolab Apache Configuration" Icon on the desktop.
5. Scroll down to line 113 and 114
6. Modify the IP addresses on both lines to match the first address (eth0) you wrote down
7. Save and Close the file
8. Bring up the terminal again and enter `/kolab/sbin/kolabconf`
9. Stop all services for Kolab by typing `/kolab/bin/openpkg rc all stop`
10. Close the terminal

## Setting up your domain in Kolab

1. Open a terminal while in CentOS
- 2.



2. Shut down all services for Kolab by typing `/kolab/bin/openpkg rc all stop`
3. Type in `/kolab/sbin/kolab_bootstrap -b` and answer the questions. *They are pretty basic but if you need help go to the Kolab.org site for info or look at the example I have posted below.*
4. Start up all services for Kolab by typing `/kolab/bin/openpkg rc all start`
5. Close the terminal

Example Bootstrap with Notes:

> means the computer is asking for input

*Italics are my notes*

Regular text is what the computer is throwing out as we go through the script

### 1. Input Hostnames

> **Please enter Hostname including Domain Name (e.g. thishost.domain.tld)**

[example]: kolab.example.com

Proceeding with Hostname kolab.example.com

*Enter the name of the server probably mail.mydomain.com where mydomain.com is the domain you want for email.*

Select Master Server

> **Do you want to set up (1) a master Kolab server or (2) a slave [1]**

(1/2): 1 (always 1)

Proceeding with master server setup

## 2. Input the mail domain

> **Please enter your Maildomain - if you do not know your mail domain use the fqdn from above [yourdomain, no brackets!]: [Enter]**

*(enter the domain that you want this server to receive mail for)*

proceeding with Maildomain example.com

Kolab primary email addresses will be of the type user@example.com

Generating default configuration:

Top level DN for Kolab [dc=example,dc=com]:

base\_dn : dc=example,dc=com

bind\_dn : cn=manager,cn=internal,dc=example,dc=com

## 3. Setting the manager password

> **Please choose a manager password [your password with no brackets!]: [Enter]**

*This will be the administration password for the Kolab web interface.... Don't lose it!*

bind\_pw : <managerpassword>

done modifying /kolab/etc/kolab/kolab.conf

IMPORTANT NOTE:

use login=manager and passwd=VG1rXCixi22/c4DT when you log into the webinterface!

## 4. Setting a slave Kolab server

> **Enter fully qualified hostname of slave kolab server e.g. thishost.domain.tld [empty when done]: [Enter]**

*(We aren't doing a slave so just leave it blank and hit enter)*

prepare LDAP database...

temporarily starting slapd

Waiting for OpenLDAP to start

no dc=example,dc=com object found, creating one

mynetworkinterfaces: 127.0.0.0/8

LDAP setup finished

Create initial config files for postfix, apache, cyrus imap, saslauthd

running /kolab/sbin/kolabconf -n

kill temporary slapd

OpenPKG: stop: openldap.

Creating RSA keypair for resource password encryption

/kolab/bin/openssl genrsa -out /kolab/etc/kolab/res\_priv.pem 1024

Generating RSA private key, 1024 bit long modulus

.....++++++

.....++++++

e is 65537 (0x10001)

```

/kolab/bin/openssl rsa -in /kolab/etc/kolab/res_priv.pem -pubout -out
/kolab/etc/kolab/res_pub.pem
writing RSA key
chown kolab:kolab-n /kolab/etc/kolab/res_pub.pem /kolab/etc/kolab/res_priv.pem
Kolab can create and manage a certificate authority that can be used
to create SSL certificates for use within the Kolab environment. You
can choose to skip this section if you already have certificates for
the Kolab server.
5. Create the certificates (for SSL)
> Do you want to create CA and certificates [y] (y/n): y
(Always yes, we want certificates)
Now we need to create a certificate authority (CA) for Kolab and a server
certificate. You will be prompted for a passphrase for the CA.
#####
/kolab/etc/kolab/kolab_ca.sh -newca kolab.example.com
> Enter organization name [Kolab]: [Enter]
(use your company name like systemalt or something like that)
> Enter organizational unit [Test-CA]: [Enter]
(use your companyname-ca like systemalt-ca)
Using subject O=Kolab,OU=Test-CA,CN=kolab.example.com
Using dn
> CA certificate filename (or enter to create) [Enter]
(Just hit enter)
Making CA certificate ...
Generating a 1024 bit RSA private key
....++++++
writing new private key to '/kolab/etc/kolab/ca/private/cakey.pem'
> Enter PEM pass phrase: <passphrase>
(Use any password you wish, just don't forget it!)
> Verifying - Enter PEM pass phrase: <passphrase>
(Verify the password you just entered)
-----
/root
/kolab/etc/kolab/kolab_ca.sh -newkey kolab.example.com /kolab/etc/kolab/key.pem
Using dn
Generating RSA private key, 1024 bit long modulus
.....++++++
e is 65537 (0x10001)
writing RSA key
/root
/kolab/etc/kolab/kolab_ca.sh -newreq kolab.example.com /kolab/etc/kolab/key.pem
/kolab/etc/kolab/newreq.pem
Using dn
Request is in /kolab/etc/kolab/newreq.pem and private key is in /kolab/etc/kolab/key.pem
/root

```

```
/kolab/etc/kolab/kolab_ca.sh -sign /kolab/etc/kolab/newreq.pem
/kolab/etc/kolab/cert.pem
Using dn
Using configuration from /kolab/etc/kolab/kolab-ssl.cnf
> Enter pass phrase for /kolab/etc/kolab/ca/private/cakey.pem: <passphrase>
(Enter that password yet one more time)
Check that the request matches the signature
Signature ok
Certificate Details:
Serial Number: 1 (0x1)
Validity
Not Before: Oct 19 07:24:15 2007 GMT
Not After : Oct 16 07:24:15 2017 GMT
Subject:
commonName = kolab.example.com
X509v3 extensions:
X509v3 Basic Constraints:
CA:FALSE
Netscape Comment:
OpenSSL Generated Certificate
X509v3 Subject Key Identifier:
65:CD:3E:49:47:34:B6:05:52:25:3B:C7:C5:4D:7D:09:92:13:6D:1B
X509v3 Authority Key Identifier:
DirName:/O=Kolab/OU=Test-CA/CN=kolab.example.com
serial:85:3B:73:2D:BA:56:FC:67
> Certificate is to be certified until Oct 16 07:24:15 2017 GMT (3650 days)
Sign the certificate? [y/n]: y
> 1 out of 1 certificate requests certified, commit? [y/n] y
Write out database with 1 new entries
Data Base Updated
Signed certificate is in /kolab/etc/kolab/cert.pem
/root
chgrp kolab-r /kolab/etc/kolab/key.pem;
chmod 0640 /kolab/etc/kolab/key.pem;
chgrp kolab-r /kolab/etc/kolab/cert.pem;
chmod 0640 /kolab/etc/kolab/cert.pem;
#####
CA and certificate creation complete.
You can install /kolab/etc/kolab/ca/cacert.pem on your clients to allow them to verify
the validity of your server certificates.
```

## logging into Kolab and Horde interface

1. To access the Administration Console open a web browser and go to <https://theipaddress/admin> confirm the certificate exception and login using the username and password given in the bootstrap process. (ULBS users use the first IP address, the one we bound to eth0)
2. To access the Horde email client open a web browser and go to <https://theipaddress/horde> confirm the certificate exception and login using the username and password created in the administration console. (ULBS users use the first IP address, the one we bound to eth0)
3. For documentation on configuring the mail server go to <http://www.kolab.org/doc/doc2-1.72.pdf> , download the file and go to page 26. You will find all the info on the server admin console there.
4. For managing Horde use the embedded help.